

TDP-750 DigiPlater and Thermal Film Imaging System

Eco-friendly Thermal DigiPlater

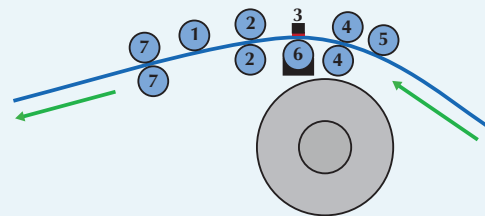
The TDP-750 has been designed to be a larger, 4-up version of the dual function TDP-459 DigiPlater and Thermal Film Imaging System. The TDP-750 requires absolutely no chemicals, toner or ink ribbon, so it is easy and cost-effective to maintain. Processor maintenance and chemical disposal are eliminated. Maintenance means simply wiping the thermal head clean.

The TDP-750 is highly automated. It requires minimal training to operate and minimal time (55 plates per hour) to produce a clean, press ready plate or high density thermal film output in 4-up sizes. Simply load it with a roll of Mitsubishi's thermal plate material or thermal film material and the TDP-750 essentially runs itself.

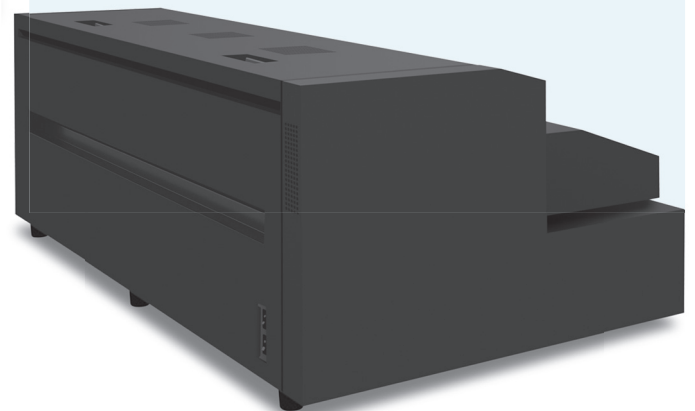
This truly processless and chemistry-free plate and film imaging system is ideal for 4-up printers who specialize in 1 or 2 color jobs. With 1204 dpi resolution, high speed production and the capability of making both plates and film, the TDP-750 is well suited for high-volume environments looking for a productive and eco-friendly option.

The **TDP-750 DigiPlater and Thermal Film Imaging System** require absolutely **no chemicals, toner or ink ribbon**, so it's easy and cost-effective to maintain. Eliminates processor maintenance and chemical disposal. Maintenance means simply wiping the thermal head clean. This is a truly processless and chemistry-free platemaking and film imaging system ideal for 2-up printers who specialize in printing mostly one and two color jobs.

TDP-750Path



- 1 Cleaning roller
- 2 Transport rollers
- 3 1204 dpi thermal head
- 4 Main pinch roller
- 5 Cleaning roller
- 6 Photon roller
- 7 Ejection pinch rollers



Chemistry-free | Processless

Technical Specifications

Thermal DigiPlate™ printing plates IFL Screen & IFS Flexo thermal film



TDP-750 dual function processless and chemistry-free CTP and film imager unit

Film type	Thermal-sensitive, graphic arts film
Film gauge	5 mil (0.125mm IFS) 4 mil (0.100mm IFL)
Film format	Min. Film Size: 19.68" x 8.66" (500mm x 220mm) Max. Film Size: 26" x 31.5" (660mm x 800mm) with extended length option 74.8" (1900mm)
DMAX	5 (IFS) 3.8 (IFL)
Plate technology	Thermal-sensitive CTP resin-coated paper-base
Plate gauge/base	8 mil (0.20mm) paper plate (TDP-R175)
Plate format	Min. Plate Size: 19.68" x 8.66" (500mm x 220mm) Max. Plate Size: 29.53" x 13.5" (750mm x 800mm)
Max Recording Size	26.4" (670mm) X 31.5" (800mm)
Print run length*	Up to 5,000 impressions *under suitable printing conditions
Printing performance	Performs with regular fountain solution and ink
RIP Option	TDP-1300 RIP v12.x (Harlequin) includes bonus SDP-Smart Tools workflow management software and Tiff-Out option.
Processless	No processor; no chemistry, no ribbons, no toner, no ink
Punch	n/a
Material supply	1 magazine - roll material; Thermal DigiPlate, Spec 1520; 200' roll lengths ; IFS-100 thermal film, 200' roll length; IFL-100 thermal film, 200' roll length
Light Imaging/source	In-line thermal head with patented thermal fusing technology
Resolution	1204 dpi
Recording speed	55 plates/hr @1204 dpi; film speed will vary based on image size and film output negative or positive) 670mm x 560mm
Screen ruling	120 lpi
Tint	5% to 90%
Power requirements	AC90/264V Auto sensing
Environment	50-70% relative humidity
Temperature	77 ± 9°F (25 ± 5°C)
Weight	218 lbs. (98 kg)
Dimensions (W x D x H)	23" x 39" x 16" (584mm x 988mm x 407mm)

PRINT. PROFIT. PRESERVE.

Thermal DigiPlate™ dual function processless and chemistry-free CTP and film imager unit is just one of many innovative and ecological offset solutions from Mitsubishi Imaging. For years we have been committed to serving the complete needs of our customers in the photographic, inkjet and graphic arts industries in an environmentally responsible way. We are the industry leader in green polyester plate technology, and offer the widest variety of inkjet media, graphic arts materials and FSC certified communications papers available. Our eco-friendly, scalable offset and digital technologies help customers stay competitive, enabling them to reduce their environmental impact for the next generation of print.



555 Theodore Fremd Ave.
Rye, NY 10580
(914) 925-3200
www.mitsubishiimaging.com